

Preventing Crime with Quality Child Care: A Critical Investment in Ohio's Safety

A report from **FIGHT CRIME: INVEST IN KIDS**

ACKNOWLEDGEMENTS

FIGHT CRIME: INVEST IN KIDS is a non-profit organization supported by tax-deductible contributions from foundations, individuals, and corporations. FIGHT CRIME: INVEST IN KIDS receives no funds from federal, state or local governments.

Major funding is provided by:

Afterschool Alliance • Robert Sterling Clark Foundation • Naomi and Nehemiah Cohen Foundation • Freddie Mac Foundation • Carl M. Freeman Foundation • Garfield Foundation • Grable Foundation • William T. Grant Foundation • Harris Foundation • Heinz Endowments • James Irvine Foundation • W.K. Kellogg Foundation • J.P. Morgan Chase Foundation • Charles Stewart Mott Foundation • David and Lucile Packard Foundation • William Penn Foundation • Rauch Foundation • The After-School Corporation • The California Endowment • The California Wellness Foundation • The Pew Charitable Trusts – Advancing Quality Pre-Kindergarten for All • Time Warner Foundation • Zellerbach Family Foundation

Founded in 1996, FIGHT CRIME: INVEST IN KIDS is a bipartisan, nonprofit, anti-crime organization led by more than 2,000 police chiefs, sheriffs, prosecutors and victims of violence. Eighty-seven members are from Ohio.

The following staff members of Fight Crime: Invest in Kids contributed to production of this report: David Kass, Rita Shah, and Phil Evans.

Publication design by Elizabeth Kuehl.

Copyright © 2004, Fight Crime: Invest in Kids, Washington, DC

EXECUTIVE SUMMARY

Educational child care and after-school programs cut crime and save money.

- At-risk three- and four-year-olds randomly excluded from the Perry Preschool educational child care program in Michigan were five times more likely to become chronic offenders by age 27 than similar children who attended the program.
- At-risk children who did not receive quality educational child care in Chicago's Child-Parent Centers were 70 percent more likely to commit violent crimes by the age of 18 than similar children who attended the program.
- In housing projects without Boys & Girls Clubs for children and adolescents, incidents of vandalism were 50 percent higher and ratings of drug activity were 37 percent higher than in housing projects with clubs.

Low-income families need, but cannot afford, child care.

- Sixty-two percent of children under age six in Ohio have both parents, or their only parent, in the workforce.
- The average fee at a child care center in Ohio is \$6,292 a year for a toddler—the same as the average cost of public university tuition. Services for two children can exceed the annual salary of a full-time, minimum-wage earner.
- Nationwide, 79 percent of mothers with children between the ages of six and 13 are in the labor force.
- Many parents cannot afford to pay for after-school care at a center since the average cost of care is \$5,148 annually in Ohio.

Quality child care saves more money than it costs, but the federal child care subsidy program remains severely underfunded.

- Educational child care programs save more than \$7 (including more than \$6 in crime savings) for every \$1 invested.
- The federal government's child care subsidy program is so underfunded that it can serve only one in ten eligible children in Ohio.

Preventing Crime with Quality Child Care: A Critical Investment in Ohio's Safety

As an organization of police chiefs, sheriffs, prosecutors and victims of violence, the members of FIGHT CRIME: INVEST IN KIDS believe in tough law enforcement. Dangerous criminals need to be behind bars. Law enforcement leaders, however, also know from years of experience that crime can be prevented before anyone is hurt or killed by helping kids get the right start in life. That is why law enforcement leaders nationwide have taken a hard-nosed look at what really works to prevent youth violence and crime, and the results are clear. Research shows that quality educational child care for preschool-age children and after-school programs for older kids lead to lower rates of crime, drug use, and welfare dependence, and to higher rates of high school graduation as the children reach adulthood.

Research Shows Quality Early Childhood and After-School Programs Cut Crime

Law enforcement leaders have long known from experience that intervening early in children's lives is the best way to prevent violence and crime. Researchers now have long-term studies to support what many have known from experience. The research results are dramatic and the evidence is clear: quality early childhood programs, especially for at-risk children, cut later crime. For example:

- Children from low-income families who were randomly assigned at ages three and four to participate in the High/Scope Perry Preschool program in Michigan were five times less likely than similar children from low-income families to become chronic lawbreakers by age 27. In

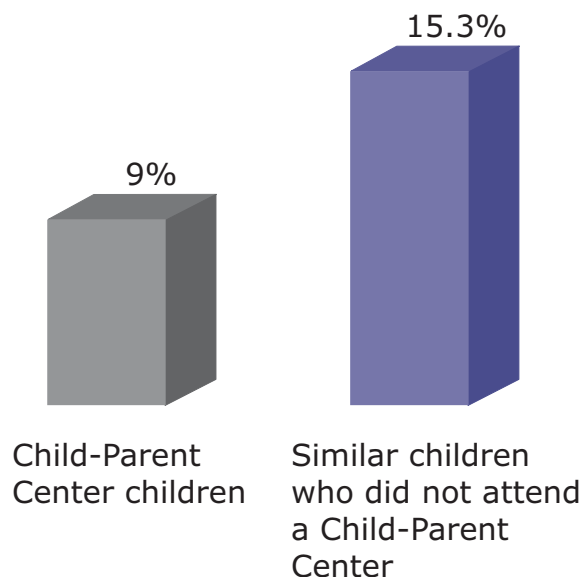
addition to these crime outcomes, academic and economic benefits were also found. Those who were not in the program were twice as likely to have been placed in special education for one year or more, and were 35 percent more likely to have received welfare or other means-tested social services as adults.¹

- Chicago's federally-funded Child-Parent Centers have served 100,000 three- and four-year-olds since 1967. Research shows that similar children from low-income neighborhoods who were excluded from the program were 70 percent more likely to have been arrested for a violent crime by age 18 than those who attended the program. This program will have prevented an estimated 33,000 crimes by the time the children already served reach the age of 18. In addition to these crime outcomes, academic benefits were also found. Those not in the program were 67 percent more likely to have been retained a grade in school and 71 percent more likely to have been placed in special education.²

- Children who were not enrolled in early childhood education centers with North Carolina's Smart Start quality improvement assistance demonstrated significantly more behavioral problems than children who attended centers with the Smart Start services. Specifically, they were twice as likely to rate poorly on behavior problems such as aggressive acts and poor temper control, anxiety, and hyperactivity in kindergarten.³ This is important because research shows that sixty percent of children with high levels of disruptive, aggressive behaviors in early childhood will

At-Risk Children Without Quality Pre-kindergarten were 70% More Likely to Commit Violent Crimes

An Arrest for Violence by Age 18



Chicago Child-Parent Centers

manifest high levels of antisocial and delinquent behavior later in life.⁴ If children are, instead, taught to get along with their peers early on, the lesson can last a lifetime.

- Large national studies showed that children who are traditionally at-risk of doing poorly in school and who were enrolled in high quality preschool programs had no more behavior problems at age eight than children who were not at risk. In contrast, when at-risk children received poor quality care their earlier levels of problem behaviors persisted.⁵

Research also shows that quality after-school child care can transform hours of soaring crime into hours of constructive, supervised activities where children learn values and skills needed to succeed in school and become contributing adults. For example:

- In a study conducted in several U. S. cities, five housing projects without Boys & Girls clubs serving children and adolescents were

compared to five receiving new clubs. At the beginning, drug activity and vandalism in the housing projects were the same. By the time the study ended, the projects without the programs had 50 percent more vandalism and scored 37 percent worse on drug activity.⁶

- Young people aged 10-16 who were randomly assigned to a Big Brothers/Big Sisters waiting list were almost twice as likely to begin illegal drug use and nearly three times more likely to hit someone compared to those who were given a mentor.⁷

- A study of children 5-15 years old who were enrolled in an after-school and summer program in a Canadian housing project showed that, compared to the two years prior to the program, the number of juvenile arrests declined by 75 percent.⁸

Few after-school programs have the funding necessary to produce such dramatic results. The results cited above were for programs operating with funds that allowed for the use of quality program designs and adequate numbers of caring, well-trained staff.

Most at-risk kids, even with poor child care services, become contributing adults. Nevertheless, failing to assure access to quality programs multiplies the risk that these children will become involved in crime and violence and decreases the likelihood that they will ever achieve their full potential.

Only One in Ten of Ohio's Eligible Children Receive Child Care Assistance

Though quality child care programs are shown to cut crime, federal child care subsidies only serve a fraction of eligible children in Ohio due to inadequate funding. The Child Care and Development Block Grant (CCDBG) is the principal source of federal funds for child care assistance. States, which are required to provide matching funds, can use these resources to help low-income families pay for child care and after school services while the parent(s) is employed, attends educational or training programs, or

looks for work.⁹ CCDBG funds can be used for children under 13 years of age (or up to 19 years if physically or mentally incapable of self-care or under court supervision).¹⁰

States have significant flexibility to design policies and determine who is eligible and how much child care providers will be paid by the state and by the parents while conforming to broad guidelines specified by the federal rules and regulations. The federal government, however, has established some parameters within which the states must operate.¹¹

Another federal government program, Head Start, also provides educational child care for children. There are, however, important differences between Head Start and CCDBG. First, Head Start provides services to 3- and 4-year-old children while CCDBG provides funds for children from birth to 13 years. Second, Head Start provides services to children in poverty while CCDBG serves low- and moderate-income families. Third, most Head Start programs offer only half-day services, leaving many families with the need for “wrap-around” child care services.¹² Families can use CCDBG funds to pay for those services. Nevertheless, neither Head Start nor CCDBG are coming close to serving all of those who are eligible. Many families qualify for both programs but are not receiving either.

In Ohio, CCDBG funds are provided to parents through the Child Care and Development program. The program serves low-income families whose income does not exceed 85 percent of the state median income and who are working, attending a job training or education program, or receive or need to receive protective services. Service is guaranteed to all families receiving Ohio Works First (OWF/TANF) financial assistance and to those families transitioning off of OWF/TANF for up to 12 consecutive months.¹³

eligible children by providing child care subsidies, inadequate funding allows only a small minority of children to be served. Nationally, only one in seven eligible children are receiving CCDBG subsidies.¹⁴ In 2002, CCDBG funds provided nationally by the federal government totaled \$4.8 billion and the states provided an additional \$1.1 billion in matching funds.¹⁵ An average of 2.1 million children nationwide were served monthly by these funds.¹⁶ Millions more are denied access to the child care services they need.

The situation is even more dire in the state of Ohio. CCDBG provides help to only one in ten eligible children in Ohio due to lack of funds.¹⁷ Federal CCDBG funds to Ohio totaled \$198.1 million in 2002 and the state provided \$41.1 million in matching funds.¹⁸ This total funding helped an average of 70,600 children each month.¹⁹

The need for increases in CCDBG funding becomes more urgent each year as the demand and cost for services rise. Sixty-two percent of children under age six in Ohio have both parents, or their only parent, in the workforce.²⁰ Most children under six are in the care of

someone other than their parents during the work day. The only question is whether they are in “child storage” (for instance, parked in front of a TV set) or in quality programs that help them learn to get along with others and start school ready to succeed.

Many parents cannot afford the cost of quality educational child care. The average annual child care center costs in Ohio are \$6,292 for a toddler and \$5,668 for a preschooler²¹—the same as the average cost of public university tuition.²² At that cost, preschool services for two children can exceed \$11,900—more than the annual salary of a full-time, minimum-wage earner.²³ Many parents cannot pay this any more than they could pay private school tuition if public schools closed.

“The average child care center costs in Ohio are \$6,292 for a toddler and \$5,668 for a preschooler annually—the same as the average cost of public university tuition.”

Though the system was designed to help all

Low-income, working parents of school-age

children face the same need for child care in the after school hours. Nationwide, 79 percent of mothers with children between the ages of six and 13 are in the labor force.²⁴ Half of the children in kindergarten through eighth grade are in the care of someone other than their parent before and after school on a regular basis.²⁵ Many are in the care of an older sibling or are caring for themselves.

National data show that at least eleven million children and teens are unsupervised after school.²⁶ This occurs, in part, because many parents cannot afford to pay for after-school care at a center since the average cost of care is \$5,148 annually in Ohio.²⁷ Therefore, when the school day ends, thousands of students across Ohio are turned out on the street without constructive activities or supervision. Research also shows that the after school hours are the most dangerous for young people. On school days, the prime time for juvenile crime is between 3 and 6 PM. The single most likely hour of the school day for a juvenile to commit an assault inflicting serious bodily injury, or an assault with a weapon is between 3 and 4 PM.²⁸

Educational Child Care and After-school Investments Save Taxpayers Money

Not only do educational child care and after-school care cut crime, but studies show that denying these services to children results in significantly higher costs to taxpayers. Extensive analyses of programs such as the High/Scope Perry Preschool Program in Ypsilanti, Michigan and the Chicago Child-Parent Centers demonstrate overwhelmingly that these are wise investments. For example:

- The High/Scope Perry Preschool program cut crime, welfare, and other costs so much that it saved more than \$7 (including more than \$6 in crime savings) for every \$1 invested. These savings counted only the benefits to the public at large—in reduced costs of crime, welfare and remedial education and in taxes paid when the preschoolers became adult workers—without even taking into account participants' increased earnings or the increased contribution to economic growth those earnings

represent.²⁹

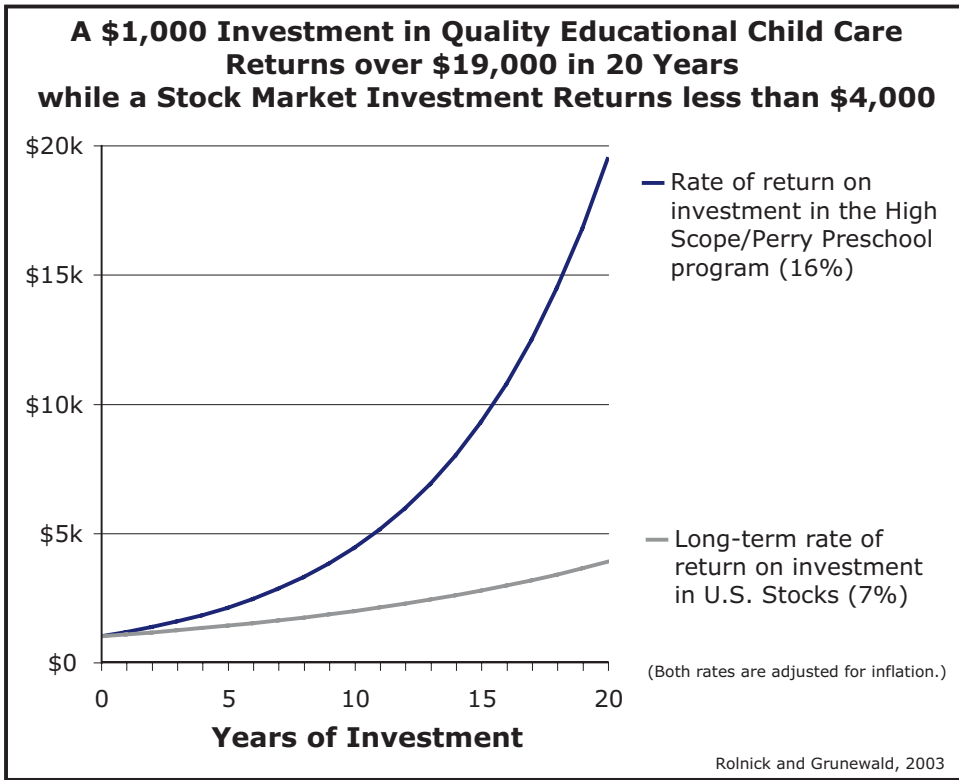
- Dr. Steven Barnett, Director of the National Institute for Early Education Research, estimated that the High/Scope Perry Preschool Program produced nearly \$150,000 per participant in savings from reduced crime alone. Even after subtracting interest, which could have been earned on the preschool investment while the High/Scope toddlers were growing up, the net savings exceeded \$70,000 per participant in crime-related savings alone, and \$88,000 once welfare, tax and other savings were included.³⁰

- A RAND Corporation study found that even after excluding all benefits to crime victims and other citizens, and subtracting what could have been earned on alternative investments, savings to government alone from providing the High/Scope services came to twice the program's costs.³¹

- An analysis by Arthur Rolnick, Senior Vice-President and Director of Research at the Federal Reserve Bank of Minneapolis, showed that the return on investment in the High/Scope Perry Preschool Program was 16 percent after adjusting for inflation. Seventy-five percent of that return went to taxpayers in the form of decreased special education expenditures, crime costs, and welfare payments. In comparison, the long-term return on U.S. stocks is 7 percent after adjusting for inflation. Thus, an initial investment of \$1,000 in a program like the Perry Preschool will return over \$19,000 in 20 years while the same initial investment in the stock market will return less than \$4,000.³²

- The Chicago Child-Parent Center program is saving taxpayers, victims, and participants over \$7 for every \$1 invested (of which taxpayers alone save almost \$3) without even counting the value of preventing pain and suffering for crime victims. For the children already served, this translates to a savings of \$2.6 billion.³³

Investments in after-school care programs, especially for the children most at risk of sliding into delinquency or becoming victims of crime,



to provide access to quality educational child care and after-school programs squanders billions.

Law Enforcement Backs Investment in Child Care and After-School Programs

The more than 2,000 members of FIGHT CRIME: INVEST IN KIDS are determined to put dangerous criminals behind bars. Those on the front lines in the fight against crime also know the most powerful weapons against crime are investments like educational

also pay for themselves many times over, not only in lives, but in tax dollars as well. For example, the after-school program in the Canadian public housing project (that resulted in a 75 percent reduction in juvenile crime) saved government agencies twice the program's cost.³⁴

Economists Agree: Failing to Invest Squanders Billions

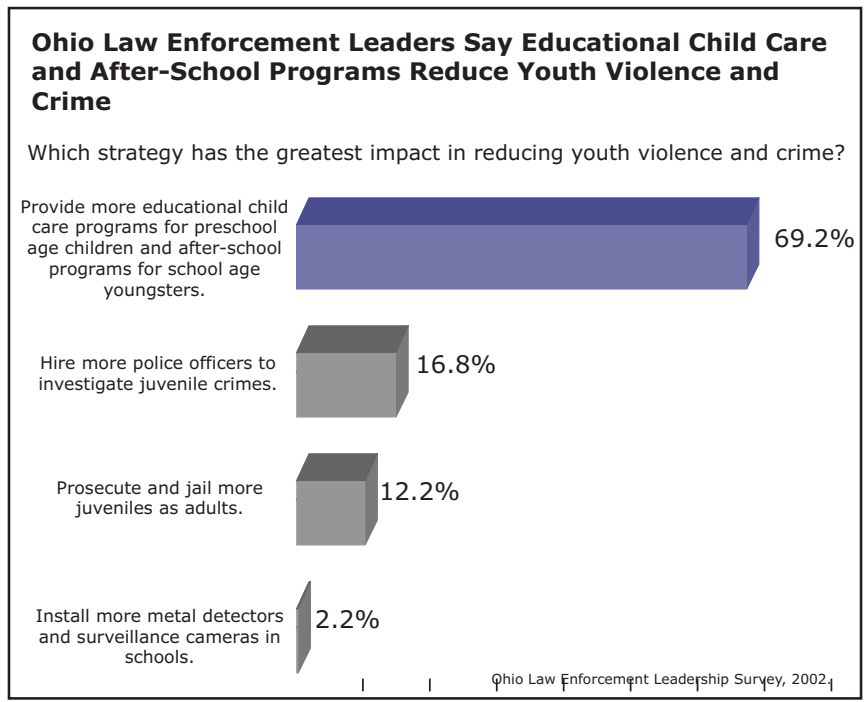
Many economists have concluded that early childhood programs are among the best investments government can make in education. William Gale and Isabel Sawhill of the Brookings Institution wrote that investing in early childhood education provides government and society "with estimated rates of return that would make a venture capitalist envious."³⁵ The Committee for Economic Development, a national group of business leaders, says that "helping all children start school ready to learn is critical to their future success and to the well-being of society as a whole... Society pays in many ways for failing to take full advantage of the learning potential of all its children, from lost economic productivity and tax revenues to higher crime rates to diminished participation in the civic and cultural life of the nation."³⁶ Failing

child care and quality after-school programs that help kids get the right start in life. In response to a Mason-Dixon Polling and Research survey, an overwhelming 69 percent of the nation's law enforcement leaders chose providing "more educational child care programs for preschool age children and after-school programs for school age youngsters" with the greatest impact in reducing youth violence and crime.³⁷ The Ohio Prosecuting Attorneys Association, the Major Cities Chiefs' Organization, the Fraternal Order of Police, the International Association of Chiefs of Police, the National District Attorneys' Association, and the National Organization for Victim Assistance have endorsed investments in quality educational child care programs and after-school programs. It is time to ensure that more children have access to educational child care and after-school programs that are proven to save money and cut crime.

Increases in Child Care Critically Needed

Law enforcement leaders and researchers agree that more of our nation's children, especially those most at-risk, must be given access to quality child care programs if later crime is to be prevented. Like children throughout the coun-

try, however, Ohio's children remain severely underserved. As reported earlier, CCDBG is so under-funded that it can serve only one in ten eligible children in Ohio.³⁸ Sadly, Ohio has restricted eligibility and increased copayments, which has reduced the number of working low-income families who qualify for assistance.³⁹ Assistance from the federal level is critically needed especially now when Ohio, like most states, is faced with rising child care costs and a tight state budget. Without increased CCDBG subsidies, thousands of eligible children will continue to be denied access to quality educational child care and after-school programs that have been proven to help children avoid a life of crime, graduate from high school, and become responsible citizens.



Endnotes

- ¹ Schweinhart, L.J., Barnes, H.V., & Weikart, D.P. (1993). Significant benefits: The High/Scope Perry Preschool study through age 27. Ypsilanti, MI: High/Scope Press.
- ² Reynolds, A. J., Temple, J. A., Robertson, D. L., & Mann, E. A. (2001). Long-term effects of an early childhood intervention on educational achievement and juvenile arrest. *Journal of the American Medical Association*, 285(12), 2339-2380.
- ³ Maxwell, K., Bryant, D., & Miller-Johnson, S. (1999). *Smart Start: A six-county study of the effects of Smart Start Child Care on kindergarten entry skill*. Retrieved from the University of North Carolina Web site: <http://www.fpg.unc.edu/~smartstart>
- ⁴ Campbell, S.B., Shaw, D.S., & Gilliom, M. (2000). Early externalizing behavior problems: Toddlers and preschoolers at risk for later maladjustment. *Development and Psychopathology*, 12, 467-488; Nagin, D., & Tremblay, R.E. (1999). Trajectories of boys' physical aggression, opposition, and hyperactivity on the path to physically violent and nonviolent juvenile delinquency. *Child Development*, 70, 1181-1196. Both cited in Raver, C.C. (2002). Emotions matter: Making the case for the role of young children's emotional development for early school readiness. *Social Policy Report*, XVI(3). Retrieved from the Society for Research in Child Development Web site: <http://www.srcd.org/spr.html>
- ⁵ Peisner-Feinberg, E. S. et al. (1999). *The children of the cost, quality, and outcomes study go to school*. Retrieved from the University of North Carolina Web site: <http://www.fpg.unc.edu/~NCEDL/PAGES/cq.htm>
- ⁶ Schinke, S.P., Orlandi, M.A., & Cole, K.C. (1992). Boys & Girls Clubs in public housing developments: Prevention services for youth at risk. *Journal of Community Psychology*, OSAP Special Issue, 118-128.
- ⁷ Tierney, J. P., Grossman, J. B., Resch, N. L. (1995). *Making a difference: An impact study of Big Brothers/Big Sisters*. Philadelphia: Public/Private Ventures.
- ⁸ Jones, M. A., & Offord, D. R. (1989). Reduction of antisocial behavior in poor children by nonschool skill-development. *Journal of Child Psychology and Psychiatry and Allied Disciplines*, 30, 737-750.
- ⁹ Federal funding for CCDBG has two components: mandatory and discretionary funds. The mandatory funding stream itself has two parts: mandatory and matching funds. The former is the base amount that is automatically available to states each year. Matching funds are those above the base funding amount that are allocated according to the number of children under age 13 in each state. States must put up state matching funds to draw down the federal dollars. Discretionary funds are available to states without a match requirement. See Schulman, K. (March, 2003). *Key facts: Essential information about child care, early education and school-age care*. Washington, DC: Children's Defense Fund.
- ¹⁰ U.S. Department of Health and Human Services, Child Care Bureau. (2003). *The Child Care and Development Fund (Fiscal Years 2002-2003)*. Retrieved from http://www.acf.hhs.gov/programs/ccb/geninfo/ccdf02_03desc.htm
- ¹¹ Schulman, K. (2003, March). *Key facts: Essential information about child care, early education and school-age care*. Washington, DC: Children's Defense Fund. For example, states: a) may use CCDBG funds to serve families earning up to 85 percent of the state median income; b) must spend a minimum of four percent of their total CCDBG funds on improving quality, expanding supply, and providing consumer education; c) must require all providers (except certain relatives) who receive CCDBG funds to meet minimum health and safety standards; d) must set reimbursement rates for child care that ensure that eligible children have access to child care equal to the access available to children who are not receiving subsidies and must conduct a market rate survey every two years.
- ¹² Schumacher, R., & Irish, K. (2003, May). *What's new in 2002? A snapshot of Head Start children, families, teachers, and programs*. Retrieved from the Center for Law and Social Policy Web site: http://www.clasp.org/DMS/Documents/1053092277.32/HS_brief2.pdf
- ¹³ Ohio Department of Jobs and Family Services, Bureau of Child Care and Development. (2003). *Ohio child care and development fund plan for FFY 2004-2005*. Retrieved from http://jfs.ohio.gov/ocf/fund_plan/fund_plan2004.pdf
- ¹⁴ Mezey, J., Greenberg, M., and Schumacher, R. (2002). *The vast majority of federally-eligible children did not receive child care assistance in FY 2000: Increased child care funding needed to help more families*. Retrieved from the Center for Law and Social Policy Web site: http://www.clasp.org/Pubs/DMS/Documents/1024427246.32/view_html
- ¹⁵ U.S. Department of Health and Human Services, Administration for Children and Families. (2002). *State FY 2002 CCDF final allocations and earmarks*. Retrieved from <http://www.acf.hhs.gov/programs/ccb/policy1/current/im0201/im0201.pdf>
- ¹⁶ Schulman, K. (2003, May). *Child Care and Development Block Grant: State allocations of federal funds estimated*. Washington, DC: Children's Defense Fund.
- ¹⁷ U.S. Department of Health and Human Services, Administration for Children and Families. (2002). *Child Care and Development Block Grant/Child Care and Development Fund: Children served in fiscal year 1999 (average monthly)*. Retrieved from <http://www.acf.dhhs.gov/news/press/2000/cctable.htm>
- ¹⁸ U.S. Department of Health and Human Services, Administration for Children and Families. (2002). *State FY 2002 CCDF final allocations and earmarks*. Retrieved from <http://www.acf.hhs.gov/programs/ccb/policy1/current/im0201/im0201.pdf>
- ¹⁹ Shulman, K. (2003, May). *Child Care and Development Block Grant: State enrollments estimated*. Washington, DC: Children's Defense Fund.
- ²⁰ The percentage of children under age 6 in Ohio who have both or their only parent in the labor force was determined by dividing the number of children under age 6 with both or their only parent in the labor force [n=540,476—which was computed by adding the following subtotals: 350,546 (children living with both parents/both parents in labor force); 46,364 (children living with father only/father in labor force); and 143,566 (children living with mother only/mother in labor force)] by the total number of children under age 6 (n=869,999). For these figures, see: U.S. Census Bureau. (2002). *Census 2000 summary file 3 (SF 3)—P46. Age of own children under 18 years in families and subfamilies by living arrangements by employment status of parents*. Washington, DC: Author.
- ²¹ The average annual cost of care for a toddler was computed by multiplying the average weekly rate of care (\$121) by 52 weeks per year. The average annual cost of care for a preschooler was computed by multiplying the average weekly rate of care (\$109) by 52 weeks per year. For the average weekly rates, see: Ohio Child Care Resource and Referral Association. (2002). *Average rates for full-time weekly child care in Ohio*. Retrieved from http://ocrra.org/reports_ocrra.htm

- ²² American Association of State Colleges and Universities, & National Association of State Universities and Land-Grant Colleges. (2003). *Student charges and financial aid: 2002-2003*. Washington, DC: American Association of State Colleges and Universities. The average cost of tuition and fees for a public four-year institution in Ohio was \$6,161 for the 2002-2003 academic year.
- ²³ U.S. Department of Labor. (2003). *Minimum wage laws in the states*. Retrieved from <http://www.dol.gov/esa/minwage/america.htm>. Minimum wage in OH is \$5.15 per hour. An annual salary of \$10,712 was computed by multiplying: \$5.15 x 40 hours per week x 52 weeks per year.
- ²⁴ "In the labor force" includes mothers who are employed as well as mothers who are looking for work. Unpublished data from U.S. Department of Justice, Bureau of Labor Statistics. (2001, March). *Current Population Survey*. Washington, DC: Author. As cited in Schulman, K. (2003, March). *Key facts: Essential information about child care, early education and school-age care*. Washington, DC: Children's Defense Fund.
- ²⁵ Data from the U.S. Department of Education, National Center for Education Statistics. (2001). *National Household Education Survey*. Washington, DC: Author. As cited in Federal Interagency Forum on Child and Family Statistics. (2002). *America's children: Key national indicators of well-being, 2002*. Retrieved from <http://childstats.gov/americaschildren/>
- ²⁶ The number of children unsupervised after school was calculated by adding the estimated number of 6- to 12-year-olds who are unsupervised (n=4,000,000) and the estimated number of 13- and 14-year-olds who are unsupervised (n=4,000,000). Since the number of 15- to 18-year-olds who are unsupervised, it is likely that the estimate is closer to eleven million unsupervised children in the after school hours. For the number of 6- to 12-year-olds, see: Capizzano, J., Tout, K., & Adams, G. (2000). *Child care patterns of school-age children with employed mothers*. Washington, DC: Urban Institute. For the number of 13- and 14-year-olds, see: Miller, B. (2000). *Estimates of thirteen- and fourteen-year-olds unsupervised after school*. Wellesley, MA: National Institute on Out-of-School Time. For the full estimate, see: Newman, S. A., Fox, J. A., Flynn, E. A., & Christeson, W. (2000). *America's after school choice: The prime time for juvenile crime, or youth enrichment and achievement*. Retrieved from the Fight Crime: Invest in Kids Web site: <http://www.fightcrime.org/reports/as2000.pdf>
- ²⁷ The average annual cost of care for school-age care was computed by multiplying the average weekly rate of care (\$99) by 52 weeks per year. For the average weekly rates, see: Ohio Child Care Resource and Referral Association. (2002). *Average rates for full-time weekly child care in Ohio*. Retrieved from http://occr.org/reports_occr.htm
- ²⁸ Fox, J.A. (2003). *Time of day for youth violence (ages 10-17), 1999*. Boston, MA: Northeastern University, adapted from 1999 National Incident-Based Reporting System data.
- ²⁹ Schweinhart, L.J., Barnes, H.V., & Weikart, D.P. (1993). *Significant benefits: The High/Scope Perry Preschool study through age 27*. Ypsilanti, MI: High/Scope Press.
- ³⁰ Barnett, S.W. (1993). Cost benefit analysis. In L.J. Schweinhart, H.V. Barnes, & D. P. Weikart (Eds.), *Significant benefits: The High/Scope Perry Preschool study through age 27* (pp. 143-173). Ypsilanti, MI: High/Scope Press.
- ³¹ Karoly, L.A., Greenwood, P.W., Everingham, S.S., Hoube, J., Kilburn, R.M., Rydell, C.P., Sanders M., & Chiesa, J. (1998). *Investing in our children: What we know and don't know about the costs and benefits of early childhood interventions*. Santa Monica, CA: RAND.
- ³² Rolnick, A., & Grunewald, R. (2003). *Early childhood development: Economic development with a high public return*. Retrieved from the Federal Reserve Bank of Minneapolis Web site: <http://www.minneapolisfed.org/pubs/fedgaz/03-03/earlychild.cfm>
- ³³ Reynolds, A. J., Temple, J. A., Robertson, D. L., & Mann, E. A. (2002). Age 21 cost-benefit analysis of the Title I Chicago Child-Parent Centers. *Educational Evaluation and Policy Analysis*, 24(4), 267-303.
- ³⁴ Jones, M. A., & Offord, D. R. (1989). Reduction of antisocial behavior in poor children by nonschool skill-development. *Journal of Child Psychology and Psychiatry and Allied Disciplines*, 30, 737-750.
- ³⁵ Gale, W., & Sawhill, I.V. (1999, February 17). The best return on the surplus. *The Washington Post*, p. A17.
- ³⁶ Committee for Economic Development, Research and Policy Committee. (2002). *Preschool for all: Investing in a productive and just society* (p. 1). New York: Author.
- ³⁷ Mason-Dixon Polling and Research. (2002, August). *Ohio law enforcement leadership survey*. Washington, DC: Fight Crime: Invest in Kids. Note: Many respondents favored adopting more than one strategy, and a majority ranked hiring more police officers as the second strategy with the greatest impact.
- ³⁸ U.S. Department of Health and Human Services, Administration for Children and Families. (2002). *Child Care and Development Block Grant/Child Care and Development Fund: Children served in fiscal year 1999 (average monthly)*. Retrieved from <http://www.acf.dhhs.gov/news/press/2000/cctable.htm>
- ³⁹ U.S. General Accounting Office. (2003, May). *Child care: Recent state policy changes affecting the availability of assistance for low-income families*. Retrieved from <http://www.gao.gov/new.items/d03588.pdf>

For more information or to access other reports visit us at: www.fightcrime.org