

i.e. communications, LLC

in consultation with

The Survey & Policy Research Institute at
San Jose State University

**Survey of California
Law Enforcement
Leadership on Mental
Health Services**

Attitudes about:

- **Allocation of Prop 63
Funding**
- **Unmet Mental Health
Needs of At-Risk Youth**
- **Treatment that Works in
Fighting Crime**

September 2005

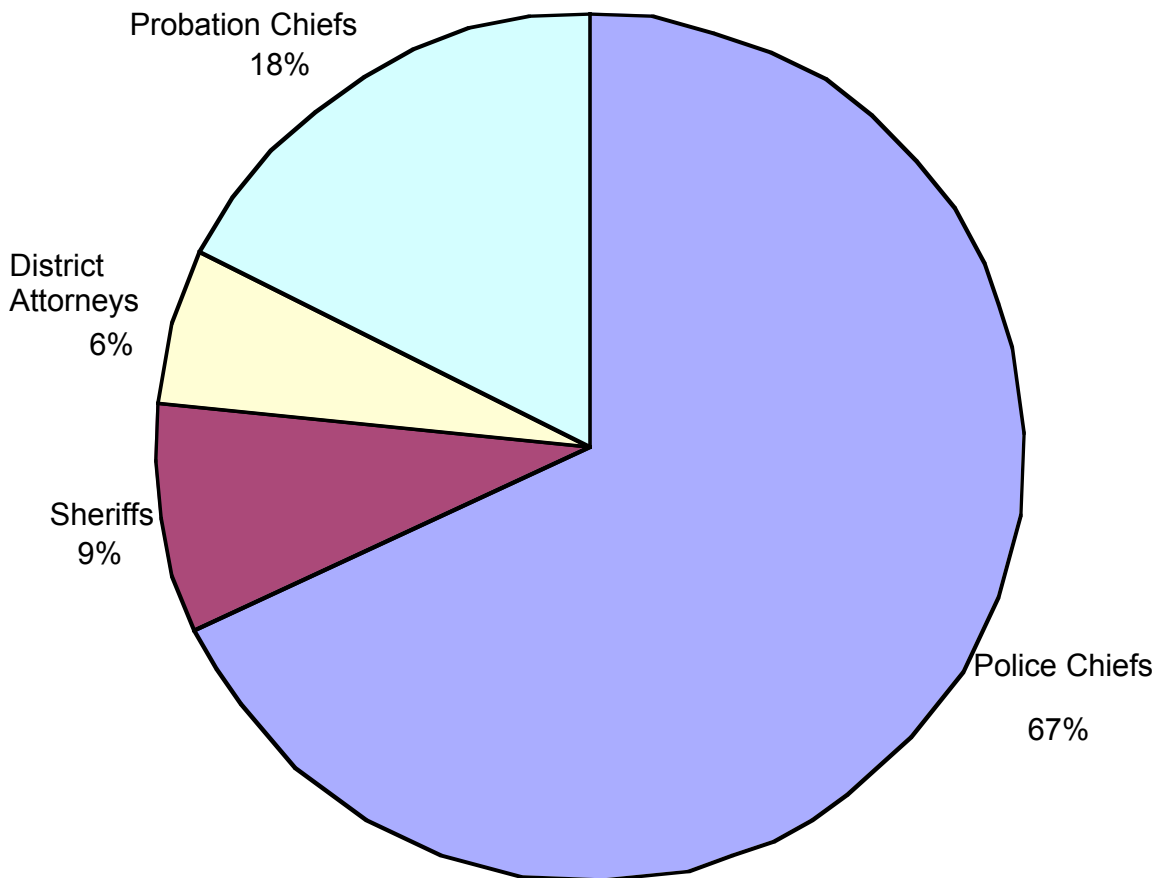
Poll Commissioned by
FIGHT CRIME: INVEST IN KIDS *California*

September 2005

Survey of California Law Enforcement Leadership on Mental Health Services

STATEWIDE POLL RESULTS

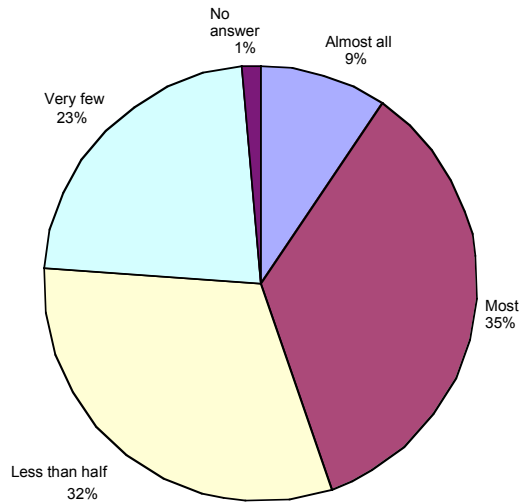
FIGHT CRIME: INVEST IN KIDS California engaged *i.e.* communications, LLC to conduct a statewide survey of law enforcement leaders, including 362 police chiefs, 58 sheriffs, 58 district attorneys and 59 probation chiefs. These 537 law enforcement leaders were asked to address questions pertaining to mental health issues, specifically addressing the at-risk youth population and Mental Health Services Act/Proposition 63 funds. They were contacted by mail beginning June 28, 2005 and given the option of responding via mail, fax or online. As of July 25, 2005, 222 of those contacted had responded. Of the 41 percent who replied, 18 percent were probation chiefs, 6 percent district attorneys, 9 percent sheriffs and 67 percent were police chiefs. According to the Survey & Policy Research Institute at San Jose State University, which served as an advisory consultant on the project, this is a strong response rate and the survey was conducted correctly, yielding methodologically sound results.



QUESTION 1:

Please estimate what portion of the at-risk youth that your agency encounters needs mental health services.

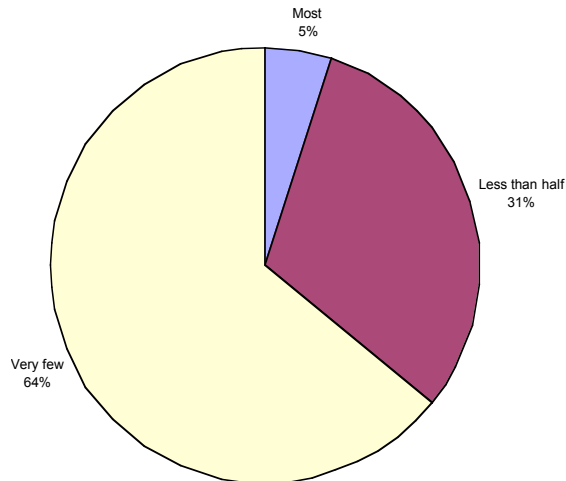
9 % Almost all
35% Most
32% Less than half
23% Very few
1% No answer



QUESTION 2:

Please estimate what portion of the at-risk youth your agency encounters is receiving mental health services.

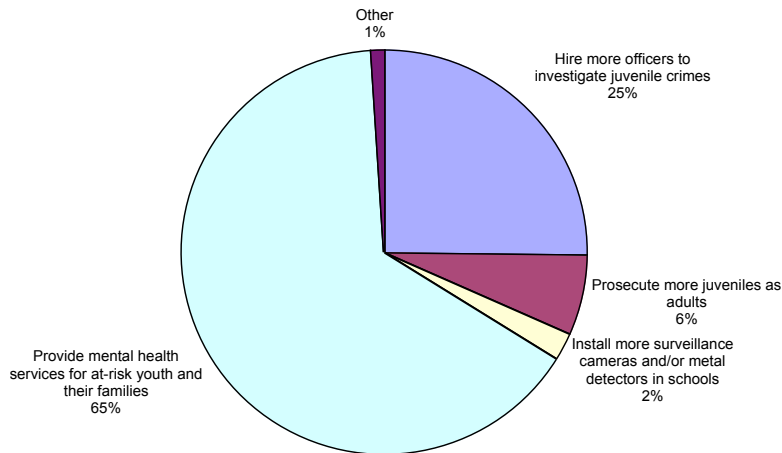
0% Almost all
5% Most
31% Less than half
64% Very few



QUESTION 3:

Which of these strategies do you think is the most effective for reducing juvenile crime?

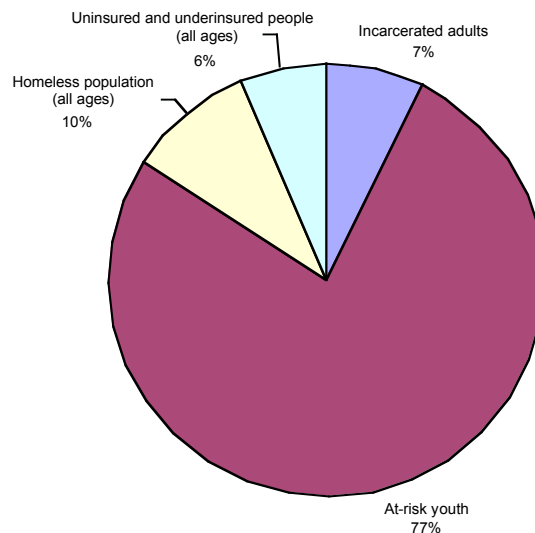
- 25% Hire more officers to investigate juvenile crimes
- 6% Prosecute more juveniles as adults
- 2% Install more surveillance cameras and/or metal detectors in schools
- 66% Provide mental health services for at-risk youth and their families
- 1% Other



QUESTION 4:

Please rank the following target populations in terms of their priority for receiving MHSA (Prop. 63) funds in order to prevent future crime.

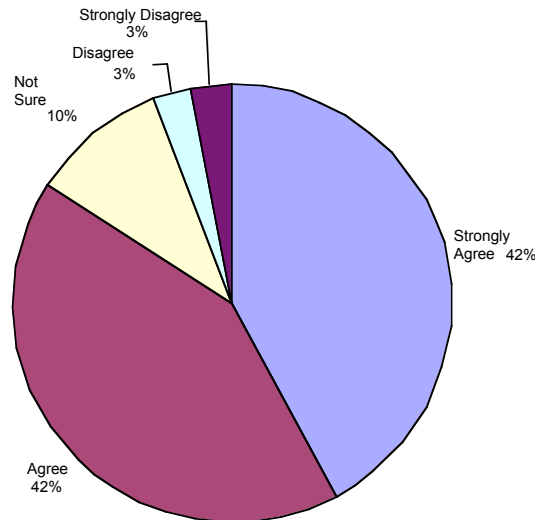
- 7% Incarcerated adults
- 77% At-risk youth
- 10% Homeless population (all ages)
- 6% Uninsured and underinsured people (all ages)



QUESTION 5:

Do you agree with the following?: “Providing mental health services to at-risk youth can significantly reduce future crime.”

42% Strongly agree
42% Agree
10% Not sure
3% Disagree
3% Strongly disagree



The following definitions were provided in the survey:

- **The Mental Health Services Act (“MHSA”)**, enacted by Proposition 63 in November 2004, will provide more than \$700 million annually to California counties to spend on mental health services based on each county’s own assessment of the services it needs for various populations. County officials are discussing how this money should be used.
- **“Mental health services”** include treatment for illnesses like depression and bi-polar disorder, as well as treatment or counseling for negative behaviors such as aggression, resistance to authority, and substance abuse.
- **“At-risk youth”** includes youth under the age of 21 who are engaged in self-destructive behavior, involved with the juvenile court system or victims of child abuse and/or neglect.

FIGHT CRIME: INVEST IN KIDS California is a bipartisan, anti-crime organization led by more than 300 sheriffs, police chiefs, district attorneys, and victims of violence. Its mission is to take a critical look at the research about what really works to keep kids from becoming criminals. Among the strategies proven to be effective are preschool, after-school programs, and youth mental health services. www.fightcrime.org/ca

i.e. communications, LLC is a policy advocacy and media consulting firm that brings California’s pressing social issues and problems to policymakers and the public. www.iecomm.org

The Survey & Policy Research Institute (SPRI) is a self-supporting, non-profit entity located at San Jose State University. It offers customized project design with expertise in all forms of survey and policy research, analysis and report generation. SPRI provides these consulting services to business, government, civic and political organizations. www2.sjsu.edu/spri